



Bespoke interior designed three bedroom, three bathroom apartment. This apartment is fully air conditioned, fitted wardrobes, wooden flooring in the bedrooms, beautiful white matte tiles in the kitchen. German kitchen with stone Italian worktops Miele & Bosch appliances, seperate washer and dryer, full fridge, seperate freezer.

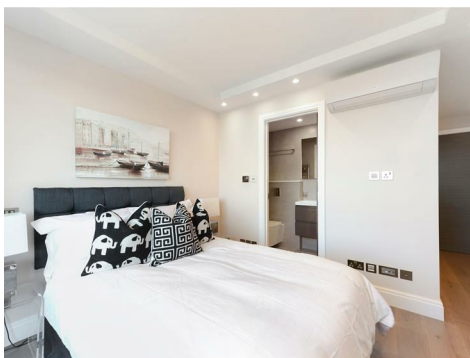
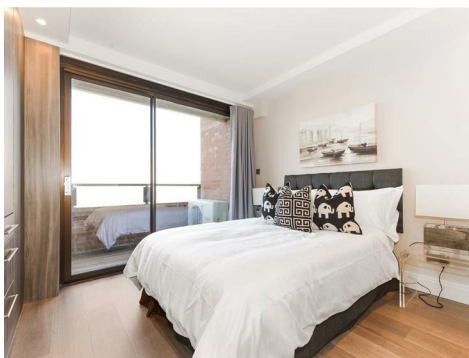
Cresta House

NW3 6HT

£950 Per Week

Subject to Contract

# FOXGREGORY





# FOXGREGORY



Energy Efficiency Rating

	Current	Potential
Very energy efficient - lower running costs		
(92 plus) A		
(81-91) B		
(69-80) C		
(55-68) D		
(39-54) E		
(21-38) F		
(1-20) G		
Not energy efficient - higher running costs		

England & Wales

EU Directive 2002/91/EC